

## ILFRACOMBE TARGA

Plans for the Club's first Targa Rally on the 30<sup>th</sup> March are coming on a pace. The 2<sup>nd</sup> round of the ASWMC Targa Rally Championship with an entry of up to 70 cars, competition in the various classes will be keen. Here are very recent pictures of Boconnoc Estate [over 2½ miles of tarmac] and some of the forest that will be used. They are mainly in the Bodmin area with a couple not far from the main A.30 making the transport sections between tests easy to navigate. All are in beautiful condition since they haven't been used for many years.

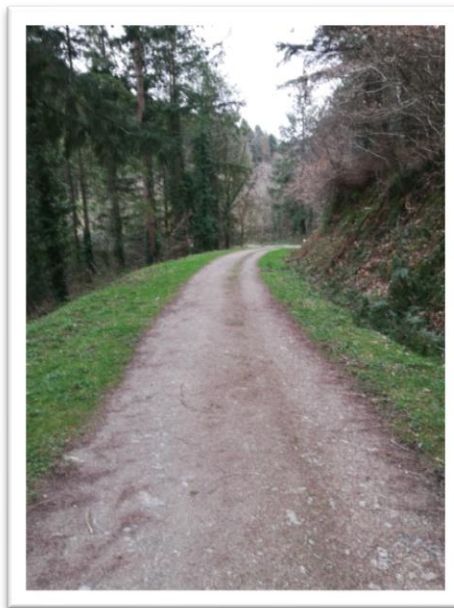
LOVELY TARMAC



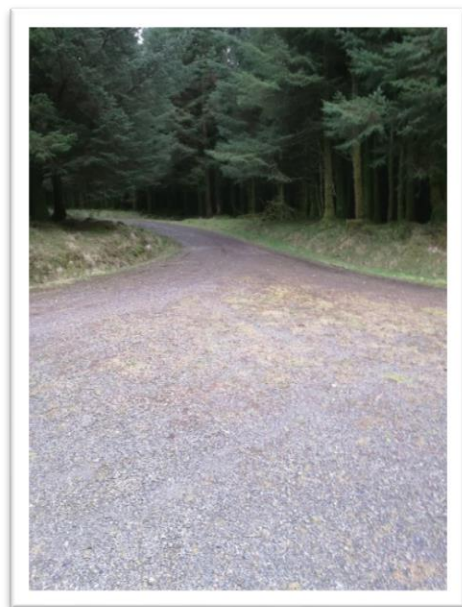
SMOOTH FOREST



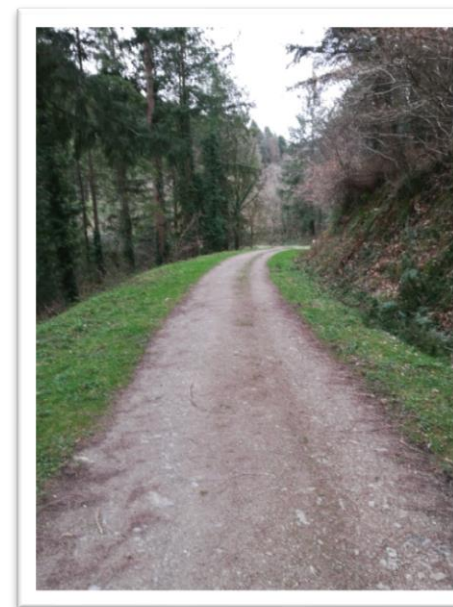
MORE SMOOTH FOREST



AND MORE!



YET MORE!



### SO, ENTER.

THIS EVENT IS SUITABLE FOR ANY CAR GIVEN THE MINIMUM OF PREPARATION.

THE NAVIGATION IS EASY, THE TESTS STRAIGHTFORWARD, A CHALLENGE FOR THE DRIVER AND NAVIGATOR PROVIDING A FUN-FILLED DAYS MOTORSPORT.

TO ENTER LOOK FOR THE 'REGULATIONS' AND ENTRY DETAILS ON THIS WEBSITE.

IF YOU CAN'T ENTER PLEASE HELP US MAKE THE EVENT A GREAT SUCCESS BY MARSHALLING; THERE ARE LOTS OF WAYS TO BE INVOLVED! CONTACT [derekdrayton@btinternet.com](mailto:derekdrayton@btinternet.com) 07737308423